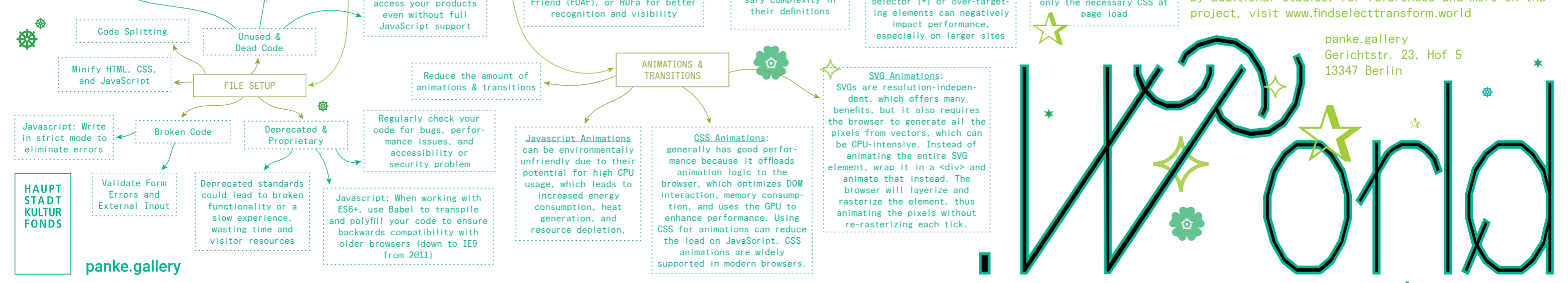
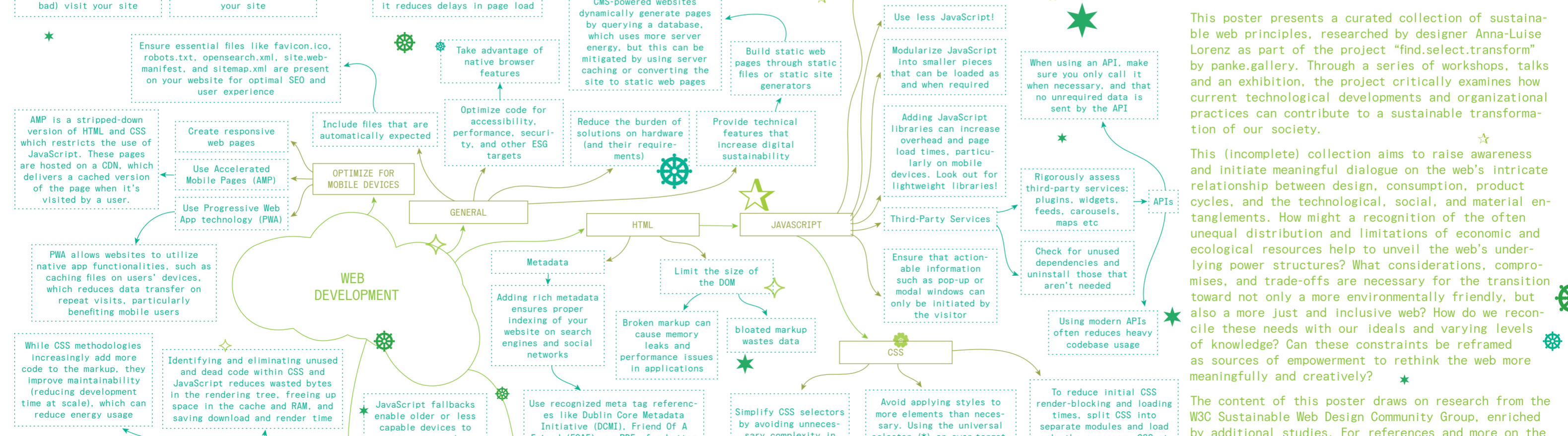
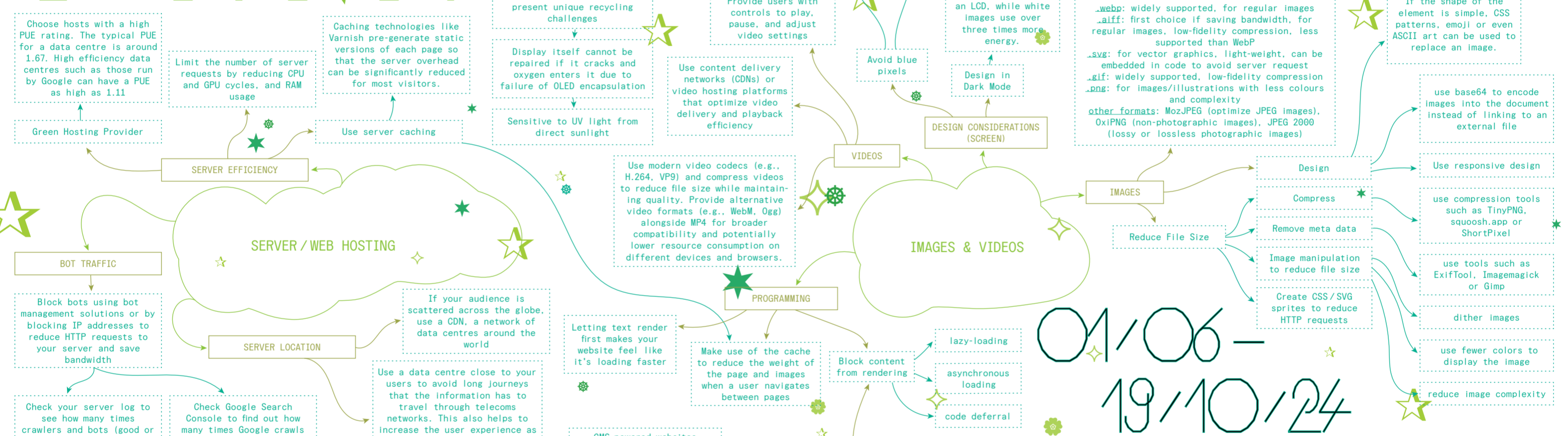
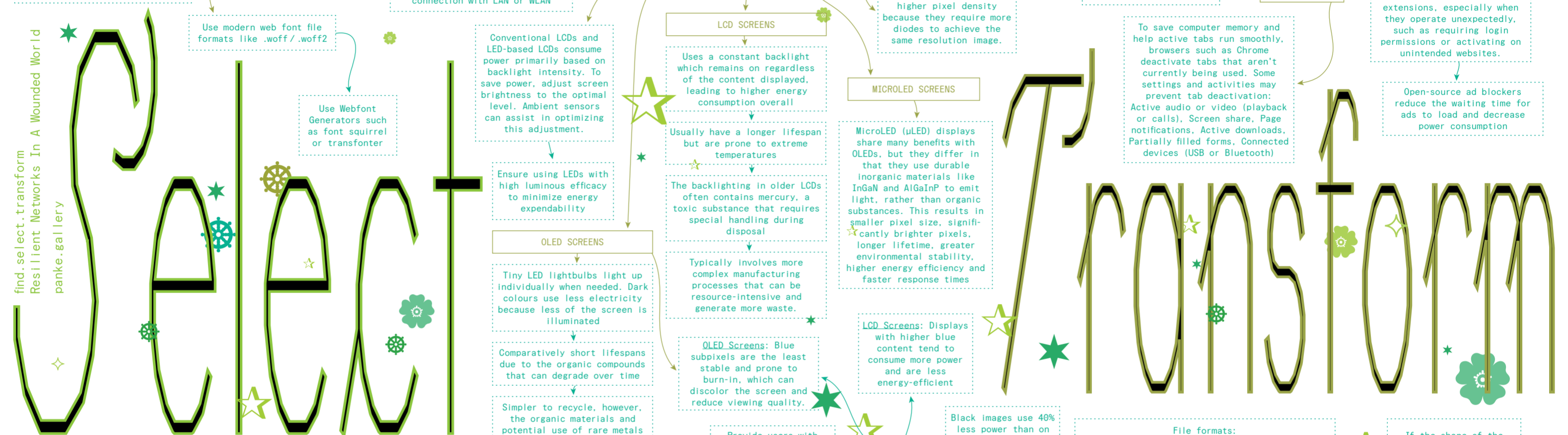
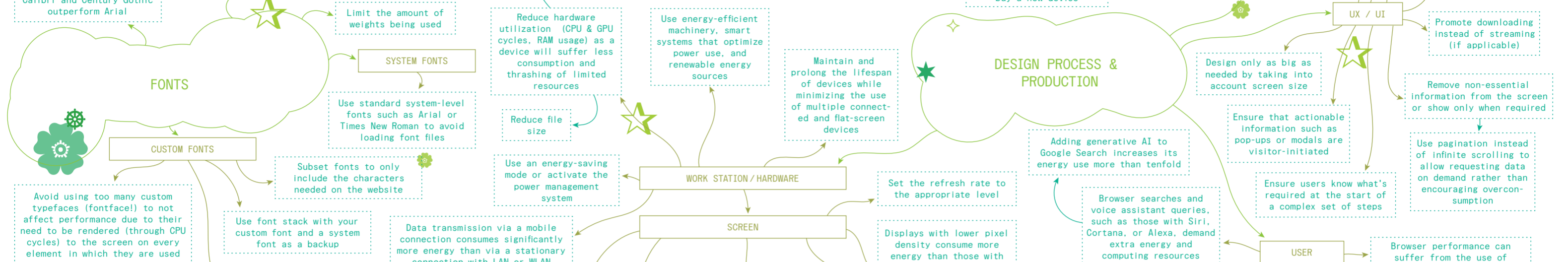


# WWW.FIND



01/06 - 19/10/24

This poster presents a curated collection of sustainable web principles, researched by designer Anna-Luise Lorenz as part of the project "find.select.transform" by panke.gallery. Through a series of workshops, talks and an exhibition, the project critically examines how current technological developments and organizational practices can contribute to a sustainable transformation of our society.

This (incomplete) collection aims to raise awareness and initiate meaningful dialogue on the web's intricate relationship between design, consumption, product cycles, and the technological, social, and material entanglements. How might a recognition of the often unequal distribution and limitations of economic and ecological resources help to unveil the web's underlying power structures? What considerations, compromises, and trade-offs are necessary for the transition toward not just a more environmentally friendly, but also a more just and inclusive web? How do we reconcile these needs with our ideals and varying levels of knowledge? Can these constraints be reframed as sources of empowerment to rethink the web more meaningfully and creatively?

The content of this poster draws on research from the W3C Sustainable Web Design Community Group, enriched by additional studies. For references and more on the project, visit [www.findselecttransform.world](http://www.findselecttransform.world)

panke.gallery  
Gerichtstr. 23, Hof 5  
13347 Berlin